



## **Notification of changes on IDS “CP” USB3.0 cameras**

IDS Imaging has released a new revision of the USB3.0 CP cameras. These are indicated by the suffix “Rev 2” on the IDS website and “CP2” on 1st Visions part numbers. IDS refers to the older version simply as “CP” with no suffix and internally as “CP1”

ON THE IDS WEBSITE, if a new revision exists, it will have the suffix “Rev 2” . Page 3 of this document provides a chart to indicate the new revision models.

This document will identify the product differences and great new enhancements.

## **IF YOU HAVE PURCHASED USB3 “CP” MODELS PREVIOUSLY PLEASE READ THIS DOCUMENT**

### **UNLESS SPECIFIED, ALL NEW SHIPMENTS ON USB3.0 CAMERAS WILL BE “Rev 2” / CP2**

There are no plans to discontinue CP1 models, but 1st Vision will not be stocking CP1 models! However you can still order then by indicating “CP1” in the product description.

#### **Product Enhancements for “Rev 2” as follows:**

- 128MB of memory buffer has been added to support pre/post trigger and packet resend for no lost frames
- Improved thermal management has been implemented increasing SNR by 2-3 dB
- Line scan and multi-AOI modes have been added on all e2v, CMOSIS and Sony sensors
- CP2 models are now FCC-B compliant vs FCC-A
- M3 mounting hole dimensions have changed to a shorter overall length (see drawings)
- CP2 models use tripod mounting plate # IDS-ST-CP2 (IDS #AL00037) whereas CP models use # IDS-ST-CP-USB3 (IDS # CK00419)
- SDK / cockpit 4.70 or higher is required for CP2 cameras

#### **Summary of changes from CP1 vs CP2**

- On IDS Website, new CP revisions are stated as “Rev 2” if available.
- Tripod mounts are different from CP1 to CP2
- Mounting hole locations have changed (see pg 2)
- Many new product enhancements have been implemented
- 1st Vision will ship CP2 unless otherwise specified; CP1’s will NOT be stocked

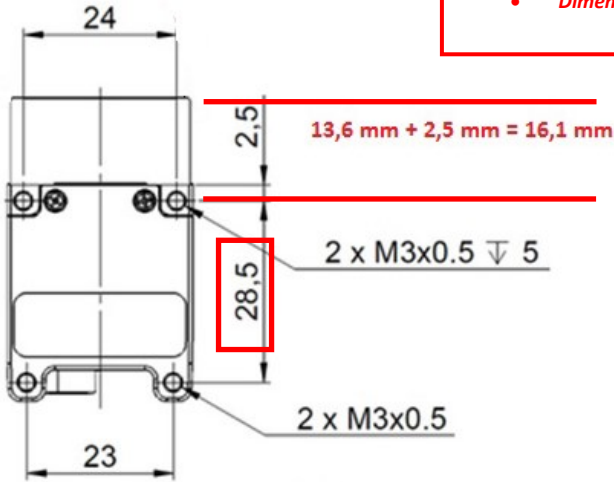
**IMPORTANT: Mechanical changes effected the mounting hole pattern and tripod mounts.**



**Notification of changes on IDS "CP" cameras**

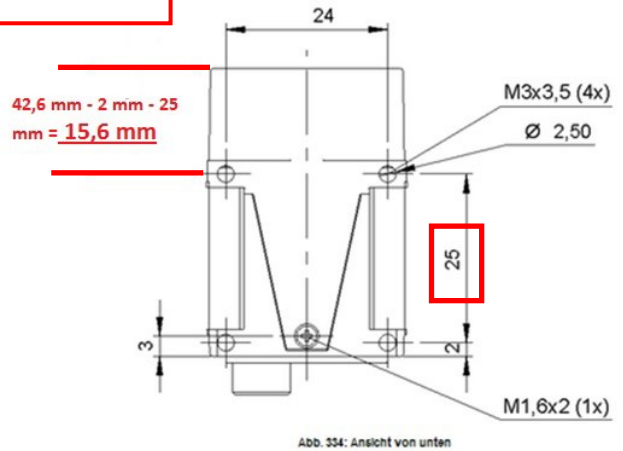
**Mechanical Changes**

**CP - Rev 1 Mounting**



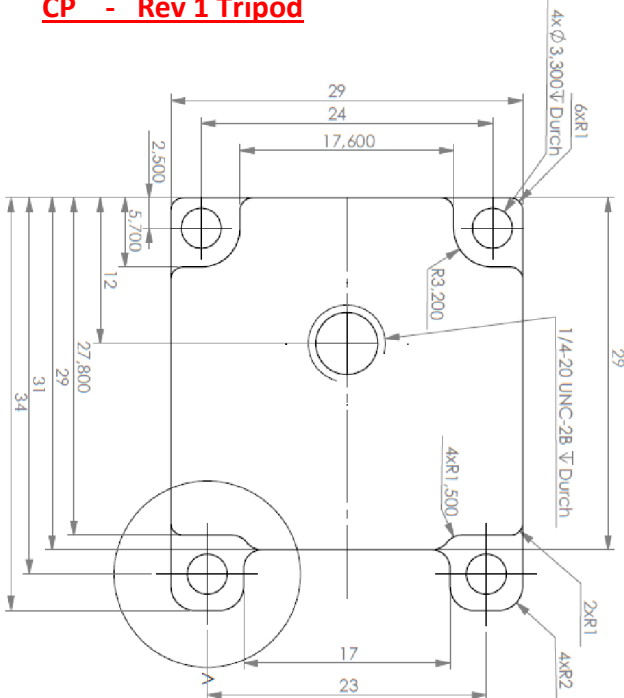
- Main changes on CP vs CP2
- Front to back mounting holes
    - Screw depth
    - Dimension to front flange

**CP2 - Rev 2 Mounting**

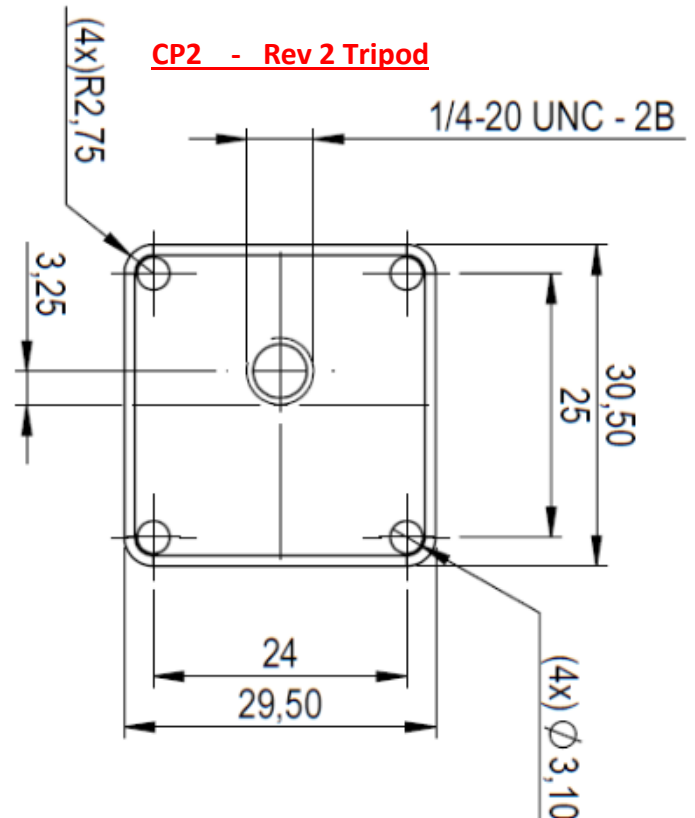


- Main changes on CP vs CP2 Tripods
- Front to back mounting holes
    - Front holes to 1/4-20

**CP - Rev 1 Tripod**



**CP2 - Rev 2 Tripod**





The chart below indicates which models are available in CP1 and CP2 models

Model	CP1	CP2	Sensor
3060	Not Available	Available	IMX174
3130	Not Available	Available	Python 500
3140	Not Available	Available	Python 1300
3160	Not Available	Available	Python 2000
3180	Not Available	Available	Python 5000
3220	Available	Not Available	MT9V032
3240	Available	Available	EV76C560
3250	Available	Available	EV76C570
3260	Not Available	Available	IMX249
3360	Available	Available	CMV2000
3370	Available	Available	CMV4000
3480	Available	Available	MT9P031
3580	Available	Available	MT9P006
3590	Not Available	Available	AR1820HS